

YOUNGSTOWN STATE WOMEN'S SOCCER RECORD BOOK



YSUsports.com/social

#GoGuins



ALL-TIME RECORDS

INDIVIDUAL CAREER RECORDS

Points	Total	Years
1. Missy Laforet	64	1996-99
2. Lauren Brennan	41	2007-10
3. Alicia Metz	39	1996-98
4. Jennifer Argiro	31	1996-99
5. Allison Ludwig	30	2010-13
6. Jade Flory	29	2011-12
7. Nicole Centofani	26	1997-00
8. Kara White	22	2000-03
9. Chelsey Haney	21	2012-Present
9. Jordan Gapczynski	21	2006-09

Goals	Total	Years
1. Missy Laforet	25	1996-99
2. Alicia Metz	17	1996-98
3. Lauren Brennan	16	2007-10
4. Allison Ludwig	13	2010-13
5. Jen Argiro	12	1996-99
5. Nicole Centofani	12	1997-00
7. Jade Flory	11	2011-12
8. Kara Cooper	9	2008-09
9. Chelsey Haney	8	2012-Present
9. Megan Gibson	8	1999-00, 02
9. Hannah Lawther	8	2001-03
9. Jordan Gapczynski	8	2006-09

Assists	Total	Years
1. Missy Laforet	14	1996-99
2. Lauren Brennan	9	2007-10
3. Katie Hohmann	8	2012-Present
3. Kim Jugenheimer	8	2001-04
3. Kara White	8	2000-03
3. Susie Dorman	8	1996-97
7. Jade Flory	7	2011-12
7. Jen Argiro	7	1996-99
9. Chelsey Haney	5	2012-Present
9. Jodi Bowlen	5	2006-09
9. Alex Lee	5	2005-08
9. Alicia Metz	5	1996-97
9. Jordan Gapczynski	5	2006-09
9. Carrie Wack	5	2005-08

Shots	Total	Years
1. Missy Laforet	212	1996-99
2. Jordan Gapczynski	148	2006-09
3. Jen Argiro	129	1996-99
4. Chesley Haney	111	2012-Present
5. Lauren Brennan	105	2007-10
6. Allison Ludwig	103	2010-13
7. Alicia Metz	96	1996-98
8. Jade Flory	84	2011-12
9. Geneva Strelka	79	2008-11
10. Lauren Roseman	75	1999-02

Saves	Total	Years
1. Christine Handte	567	1998-00
2. Caitlin Bestard	329	2002-05
3. Caitlin Bodzioney	308	2006-07
4. Mia Railing	270	2001-04
5. Mariah Snyder	200	2006-09
6. Nicole Kline	179	2008-11

7. Sarah Fennema	165	1997-98
8. Bridget Frank	136	1996
9. Jackie Podolsky	114	2012-Present
10. Ali Viola	108	2010-12

Shutouts	Total	Years
1. Mariah Snyder	7	2006-09
2. Christine Handte	6	1998-01
3. Ali Viola	5	2010-12
4. Nicole Kline	4	2008-11
5. Bridget Frank	2	1996
5. Caitlin Bodzioney	2	2006-07
5. Caitlin Bestard	2	2002-05
8. Jackie Podolsky	1	2012-Present
8. Jessica Yarter	1	2002-05
8. Mia Railing	1	2001-04
8. Jennifer Jennings	1	2002-04

Goals Against Average	Total	Years
1. Jackie Podolsky	1.32	2012-Present
2. Ali Viola	1.46	2010-12
3. Mariah Snyder	1.67	2006-09
4. Jessica Yarter	1.89	2002-05
5. Caitlin Bodzioney	1.98	2006-07
6. Nicole Kline	2.09	2008-11
7. Jennifer Jennings	2.49	2002-04
8. Sarah Fennema	2.68	1997-98
9. Bridget Frank	3.76	1996
10. Christine Handte	3.92	1998-01

Most Wins	Total	Years
1. Christine Handte	12	1998-01
2. Jackie Podolsky	9	2012-Present
3. Ali Viola	8	2010-12
4. Mariah Snyder	6	2006-09
4. Sarah Fennema	6	1997-98
6. Nicole Kline	4	2008-11
6. Caitlin Bodzioney	4	2006-07
8. Bridget Frank	3	1996
9. Mia Railing	2	2001-04
9. Caitlin Bestard	2	2002-05

Save Percentage	Total	Years
1. Caitlin Bodzioney	.811	2006-07
2. Mariah Snyder	.806	2006-09
3. Jackie Podolsky	.786	2012-Present
4. Jessica Yarter	.769	2002-05
5. Nicole Kline	.746	2008-11
6. Sarah Fennema	.743	1997-98
7. Ali Viola	.741	2010-12
8. Katie Montgomery	.737	2013-Present
9. Caitlin Bestard	.709	2002-05
10. Christine Handte	.707	1998-01

Matches Played	Total	Years
1. Alex Lee	77	2005-08
1. Caitlin Lee	77	2005-08
1. Kim Jugenheimer	77	2001-04
4. Lauren Brennan	74	2007-10
4. Carrie Wack	74	2005-08
6. Keeley Rice	73	2005-08
7. Jordan Gapczynski	72	2006-09

7. Katie Bollinger	72	2000-03
9. Lauren Roseman	71	1999-02
9. Chris Engelis	71	1996-99
9. Geneva Strelka	71	2008-11
9. Kristy Ludt	71	1996-99
9. Kara White	71	2000-03

Matches Started	Total	Years
1. Caitlin Lee	76	2005-08
2. Kristy Ludt	71	1996-99
3. Keeley Ricke	69	2005-08
3. Jen Argiro	69	1996-99
5. Katie Peterlin	67	2009-12
5. Missy Laforet	67	1996-99
7. Kara White	65	2000-03
7. Alicia Scopelite	65	1996-99
9. Christine Handte	64	1998-01
9. Lauren Roseman	64	1999-02

INDIVIDUAL SEASON RECORDS

Points	Total	Years
1. Alicia Metz	29	1997
2. Missy Laforet	23	1997
3. Lauren Brennan	19	2007
4. Jen Argiro	18	1997
4. Kara Cooper	18	2009
6. Jade Flory	17	2011
7. Allison Ludwig	16	2010
7. Megan Gibson	16	1999
9. Missy Laforet	14	1999
9. Missy Laforet	14	1996

Goals	Total	Years
1. Alicia Metz	13	1997
2. Missy Laforet	9	1997
3. Allison Ludwig	8	2010
3. Kara Cooper	8	2009
3. Lauren Brennan	8	2007
3. Jen Argiro	8	1997
7. Jade Flory	7	2011
7. Megan Gibson	7	1999
7. Missy Laforet	7	1996
10. Six times	5	m.r. - 2012

Assists	Total	Years
1. Missy Laforet	6	1999
2. Alex Lee	5	2008
2. Missy Laforet	5	1997
2. Susie Dorman	5	1997
5. Katie Hohmann	4	2013
5. Jade Flory	4	2012
5. Katie Hohman	4	2012
5. Kara White	4	2002
5. Chantel Grooms	4	2001
10. 17 Times	3	m.r. - 2012

Shots	Total	Years
1. Missy Laforet	73	1997
2. Alicia Metz	64	1997
3. Chelsey Haney	60	2013
4. Missy Laforet	59	1999
5. Katie Duracky	55	2004

ALL-TIME RECORDS

6. Jordan Gapczynski	52	2007
7. Chelsey Haney	51	2012
8. Jade Flory	48	2011
9. Jordan Gapczynski	46	2008
10. Kara Cooper	45	2009

Saves	Total	Years
1. Caitlin Bestard	176	2002
2. Caitlin Bodzioney	175	2007
3. Christine Handte	158	1998
4. Christine Handte	149	1999
5. Sarah Fennema	144	1997
6. Christine Handte	136	2001
6. Bridget Frank	136	1996
8. Caitlin Bodzioney	133	2006
9. Mariah Snyder	131	2008
10. Christine Handte	124	2000

Shutouts	Total	Years
1. Mariah Snyder	5	2008
2. Ali Viola	3	2012
2. Christine Handte	3	1999
2. Christine Handte	3	1998
5. Ali Viola	2	2011
5. Nicole Kline	2	2011
5. Mariah Snyder	2	2009
5. Bridget Frank	2	1996
9. Caitlin Bestard	1	2004
9. Mia Railing	1	2003

Goals Against Average	Total	Years
1. Jackie Podolsky	1.15	2012
2. Ali Viola	1.16	2012
3. Ali Viola	1.34	2011
4. Jackie Podolsky	1.44	2013
5. Mariah Snyder	1.51	2008
6. Mariah Snyder	1.72	2009
7. Nicole Kline	1.74	2011
8. Caitlin Bodzioney	1.88	2006
9. Jessica Yarter	1.89	2005
10. Nicole Kline	1.92	2010

Most Wins	Total	Years
1. Christine Handte	6	1999
1. Sarah Fennema	6	1997
3. Christine Handte	5	1998
3. Jackie Podolsky	5	2012
5. Mariah Snyder	4	2008
5. Jacki Podosky	4	2013
5. Ali Viola	4	2012
8. Caitlin Bodzioney	3	2006
8. Bridget Frank	3	1996
8. Ali Viola	3	2011

Save Percentage	Total	Years
1. Christine Handte	.845	1998
2. Mariah Snyder	.834	2008
3. Caitlin Bodzioney	.814	2007
4. Caitlin Bodzioney	.806	2006
5. Jackie Podolsky	.804	2012
6. Christine Handte	.797	1999
7. Nicole Kline	.797	2011

8. Caitlin Bestard	.786	2004
9. Ali Viola	.779	2011
10. Jackie Podolsky	.775	2013

Matches Played	Total	Years
1. Cerid Irvine	21	2001
1. Jenny Jacobs	21	2001
1. Kara White	21	2001
1. Kim Jugenheimer	21	2001
5. Jordan Gapczynski	20	2008
5. Lauren Brennan	20	2007
5. Kate McHugh	20	2001
5. Alex Lee	20	2007
5. Kelsey Kempton	20	2008
5. Jordan Gapczynski	20	2007

Matches Started	Total	Years
1. Jenny Jacobs	21	2001
2. Kesley Kempton	20	2008
2. Alex Lee	20	2008
2. Caitlin Lee	20	2008
2. Keeley Rice	20	2008
2. Sadie Brookman	20	2005
2. Diane Fellabaum	20	2005
2. Caitlin Lee	20	2005
2. Katie Bollinger	20	2002
2. Maura Patton	20	2002
2. Kate McHugh	20	2001
2. Jessica Tait	20	2001

INDIVIDUAL MATCH RECORDS

Points	Total	Years
1. Lauren Brennan (Howard, 2007)	9	
2. Kim Jugenheimer (Delaware State, 2003)	8	
3. Corey Cardone (Delaware State, 2003)	7	
3. Jessica Yarter (Delaware State, 2003)	7	
5. Allison Ludwig (Robert Morris, 2010)	6	
5. Hannah Lawther (Delaware State, 2002)	6	
5. Missy Laforet (Westminster, 1999)	6	

Goals	Total	Years
1. Lauren Brennan (Howard, 2007)	4	
1. Kim Jugenheimer (Delaware State, 2003)	4	
3. Allison Ludwig (Robert Morris, 2010)	3	
3. Katie Bollinger (Delaware State, 2003)	3	
3. Jessica Yarter (Delaware State, 2003)	3	
3. Hannah Lawther (Delaware State, 2002)	3	
3. Missy Laforet (Westminster, 1999)	3	
3. Missy Laforet (Howard, 1998)	3	
3. Alicia Metz (Canisius, 1997)	3	
3. Missy Laforet (Western Illinois, 1997)	3	

Assists	Total	Years
1. Corey Cardone (Delaware State, 2003)	3	
1. Chantel Grooms (IUPUI, 2001)	3	
3. Rochelle Boone (Wheeling Jesuit, 2008)	2	
3. Alex Lee (Howard, 2008)	2	
3. Katie Deprey (Delaware State, 2002)	2	
3. Kim Jugenheimer (Delaware State, 2002)	2	
3. Hannah Lawther (Delaware State, 2002)	2	
3. Kara White (Delaware State, 2002)	2	

3. Susie Dorman (Western Illinois, 1999)	2
3. Missy Laforet (Saint Francis, 1999)	2

Shots	Total	Years
1. Katie Duracky (Cleveland State, 2004)	12	
1. Alicia Metz (Robert Morris, 1997)	12	
3. Chelsey Haney (Canisius, 2012)	9	
3. Kara Cooper (Saint Francis, 2009)	9	
3. Kim Jugenheimer (Delaware State, 2003)	9	
3. Alicia Metz (Robert Morris, 1996)	9	

Saves	Total	Years
1. Kate Gigliotti (UTEP, 2000)	23	
2. Christine Handte (Western Illinois, 2000)	18	
2. Christine Handte (Saint Francis, 1998)	18	
4. Caitlin Bestard (IUPUI, 2002)	17	
4. Christine Handte (Duquesne, 1998)	17	
5. Nicole Kline (Milwaukee, 2011)	16	
5. Caitlin Bodzioney (Loyola, 2006)	16	
5. Christine Handte (Valparaiso, 2000)	16	
5. Sarah Fennema (Eastern Michigan, 1997)	16	

TEAM SEASON RECORDS

Most Wins	Total	Years
1. 2012	8	
2. 1999	6	
2. 1997	6	
4. 1998	5	
5. 2013	4	
5. 2009	4	
5. 2008	4	

Fewest Wins	Total	Years
1. 2000	0	

Most Points	Total	Years
1. 1997	105	
2. 2008	68	
3. 2012	65	
4. 2003	62	
5. 1999	59	

Most Goals	Total	Years
1. 1997	40	
2. 2003	25	
3. 2012	23	
3. 2008	23	
5. 1999	21	

Fewest Goals	Total	Years
1. 2005	5	

Most Assists	Total	Years
1. 1997	25	
2. 2008	22	
3. 2012	21	
4. 1999	17	
5. 2013	14	

Most Shots	Total	Years
1. 1997	271	
2. 1999	212	

ALL-TIME RECORDS

3. 2012	211
4. 2008	207
5. 2013	189

Most Saves

1. 2000	210
2. 2002	199
3. 2007	197
4. 2004	187
5. 1998	179

Most Shutouts

1. 2008	6
2. 2012	4
2. 2011	4
4. 1998	3
5. 2009	2
5. 2005	2
5. 1996	2

Most Overtime Matches

1. 2009	6
---------	---

Most Ties

1. 2009	3
---------	---

TEAM MATCH RECORDS

Points	41 vs. Delaware State (9/5/03)
	36 vs. Delaware State (9/4/02)
	24 vs. Wheeling Jesuit (10/17/08)
	17 at Hiram (10/9/97)
	15 vs. Canisius (10/18/97)
15 vs. Muskingum (9/3/97)	

Goals	17 vs. Delaware State (9/5/03)
	14 vs. Delaware State (9/4/02)
	8 vs. Wheeling Jesuit (10/17/08)
	8 vs. Hiram (10/9/97)
	6 vs. Canisius (10/18/97)
	6 vs. Muskingum (9/3/97)

Assists	8 vs. Wheeling Jesuit (10/17/08)
	8 vs. Delaware State (9/4/02)
	7 vs. Delaware State (9/5/03)
	5 vs. Canisius (8/31/12)
	5 vs. Westminster (9/1/99)

Shots	53 vs. Delaware State (9/5/03)
	36 vs. Muskingum (9/3/97)
	32 vs. Western Illinois (9/21/97)
	31 vs. Delaware State (9/4/02)
	29 at Robert Morris (9/24/96)

Fewest Shots	0 vs. Detroit (11/3/01)
	1 at Milwaukee (10/7/01)
	1 vs. Butler (11/7/02)
	1 at West Virginia (10/6/97)
	1 at Buffalo (9/7/96)

Saves	23 vs. UTEP (9/24/00)
	18 at American (10/8/03)
	18 at Butler (11/3/02)

18 at Western Illinois (10/13/00)
18 at Saint Francis (Pa.) (10/2/98)

Goals/Half	10 (1st) vs. Delaware State (9/5/03)
	7 (1st) vs. Wheeling Jesuit (10/17/08)
	7 (2nd) vs. Delaware State (9/5/03)
	7 (1st) vs. Delaware State (9/2/02)
	7 (2nd) vs. Delaware State (9/2/02)

FRESHMAN RECORDS

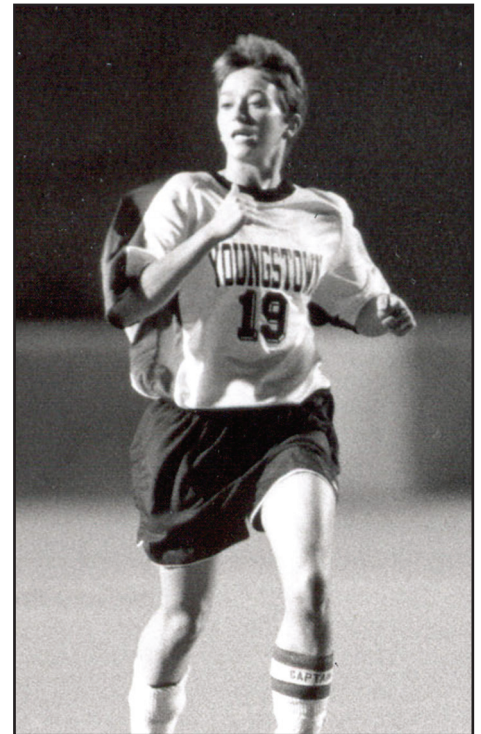
Points	Total	Years
1. Lauren Brennan	19	2007
2. Jade Flory	17	2011
3. Allison Ludwig	16	2010
3. Megan Gibson	16	1999
5. Missy Laforet	14	1996

Goals	Total	Years
1. Allison Ludwig	8	2010
1. Lauren Brennan	8	2007
3. Jade Flory	7	2011
3. Megan Gibson	7	1999
3. Missy Laforet	7	1996

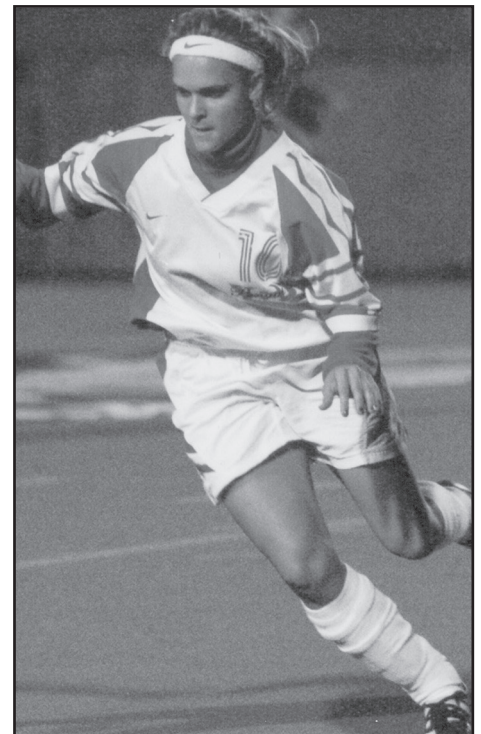
Assists	Total	Years
1. Katie Hohman	4	2012
1. Chantel Groom	4	2001
3. Shannon Leghart	3	2012
3. Lauren Brennan	3	2007
3. Corey Cardone	3	2003
3. Kim Jugenheimer	3	2001
3. Susie Dorman	3	1996

Shots	Total	Years
1. Katie Duracky	55	2004
2. Jade Flory	48	2011
3. Allison Ludwig	37	2010
4. Missy Laforet	36	1996
5. Carrie Playforth	29	2000

Saves	Total	Years
1. Caitlin Bestard	176	2002
2. Christine Handte	158	1998
3. Sarah Fennema	144	1997
4. Bridget Frank	136	1996
5. Caitlin Bodzioney	133	2006



Missy Laforet owns the career records for most points (64), most goals (25) and most assists (14).



Alicia Metz set the single-season points and goals record with 29 and 13, respectively, in 1997.

ALL-TIME RECORDS

ANNUAL STATISTICS LEADERS

POINTS

1996	Missy Laforet	14	2004	Katie Duracky	2
1997	Alicia Metz	29		Maddie Lawther	2
1998	Missy Laforet	13	2005	Four Players	1
1999	Megan Gibson	16	2006	Seven Players	1
2000	Nicole Centofanti	9	2007	Lauren Brennan	3
2001	Kara White	11		Carrie Wack	3
2002	Maura Patton	10	2008	Alex Lee	5
2003	Jessica Yarter	12	2009	Kara Cooper	2
2004	Katie Duracky	8		Olivia Dressler	2
2005	Brittney Humphrey	6	2010	Lauren Brennan	2
2006	Jordan Gapczynski	10		Shelby Parks	2
2007	Lauren Brennan	19		Kelly Storkel	2
2008	Jodi Bowlen	11	2011	Jade Flory	3
	Lauren Brennan	11		Geneva Strelka	3
2009	Kara Cooper	18	2012	Jade Flory	4
2010	Allison Ludwig	16		Katie Hohmann	4
2011	Jade Flory	17	2013	Katie Hohmann	4
2012	Chesley Haney	13			
2103	Chelsey Haney	8			

SHOTS

1996	Missy Laforet	36
1997	Missy Laforet	73
1998	Missy Laforet	44
1999	Missy Laforet	59
2000	Carrie Playforth	29
2001	Kara White	37
2002	Jessica Yarter	26
2003	Maddie Lawther	24
2004	Katie Duracky	55
2005	Kara Vezza	24
2006	Jordan Gapczynski	29
2007	Jordan Gapczynski	52
2008	Jordan Gapczynski	46
2009	Kara Cooper	45
2010	Allison Ludwig	37
2011	Jade Flory	48
2012	Chelsey Haney	52
2013	Chelsey Haney	60

SHUTOUS

1996	Bridget Frank	2
1997	Sarah Fennema	1
1998	Christine Handte	3
1999	Christine Handte	3
2000	None	
2001	None	
2002	Jennifer Jennings	1
2003	Mia Railing	1
2004	Caitlin Bestard	1
2005	Caitlin Bestard	1
	Jessica Yarter	1
2006	Caitlin Bodzioney	1
2007	Caitlin Bodzioney	1
2008	Mariah Snyder	5
2009	Mariah Snyder	2
2010	Nicole Kline	1
2011	Nicole Kline	2

GOALS

1996	Missy Laforet	7
1997	Alicia Metz	13
1998	Missy Laforet	5
1999	Megan Gibson	7
2000	Nicole Centofanti	4
2001	Kara White	5
2002	Maura Patton	5
2003	Jessica Yarter	5
2004	Katie Duracky	3
	Sadie Brookman	3
2005	Brittney Humphrey	3
2006	Jordan Gapczynski	5
2007	Lauren Brennan	8
2008	Jodi Bowlen	4
	Lauren Brennan	4
	Carrie Wack	4
2009	Kara Cooper	8
2010	Allison Ludwig	8
2011	Jade Flory	7
2012	Chelsey Haney	5
2013	Cara Armstrong	3
	Chelsey Haney	3

ASSISTS

1996	Susie Dorman	3
1997	Missy Laforet	5
	Susie Dorman	5
1998	Missy Laforet	3
1999	Missy Laforet	6
2000	Jenny Jacobs	2
	Kara White	2
2001	Chantel Grooms	5
2002	Kara White	4
2003	Corey Cardone	3

	Ali Viola	2
2012	Ali Viola	3
2013	Jackie Podolsky	1

SAVES

1996	Bridget Frank	136
1997	Sarah Fennema	144
1998	Christine Handte	158
1999	Christine Handte	149
2000	Christine Handte	124
2001	Christine Handte	136
2002	Caitlin Bestard	176
2003	Mia Railing	123
2004	Mia Railing	108
2005	Jessica Yarter	100
2006	Caitlin Bodzioney	133
2007	Caitlin Bodzioney	175
2008	Mariah Snyder	131
2009	Mariah Snyder	56
2010	Nicole Kline	77
2011	Ali Viola	60
2012	Jackie Podolsky	45
2013	Jackie Podolsky	69

GOALS AGAINST AVERAGE

1996	Bridget Frank	3.80
1997	Sarah Fennema	2.45
1998	Christine Handte	1.97
1999	Christine Handte	2.08
2000	Christine Handte	8.94
2001	Christine Handte	4.36
2002	Caitlin Bestard	5.01

2003	Mia Railing	3.98
2004	Caitlin Bestard	2.62
2005	Jessica Yarter	1.89
2006	Caitlin Bodzioney	1.88
2007	Caitlin Bodzioney	2.06
2008	Mariah Snyder	1.51
2009	Mariah Snyder	1.72
2010	Nicole Kline	1.92
2011	Ali Viola	1.34
2012	Jackie Podolsky	1.15
2103	Jackie Podolsky	1.44

GOALKEEPER MINUTES

1996	Bridget Frank	1,530
1997	Sarah Fennema	1,690
1998	Christine Handte	1,324
1999	Christine Handte	1,641
2000	Christine Handte	920
2001	Christine Handte	1,444
2002	Caitlin Bestard	1,509
2003	Mia Railing	1,288
2004	Mia Railing	919
2005	Jessica Yarter	1,425
2006	Caitlin Bodzioney	1,528
2007	Caitlin Bodzioney	1,745
2008	Mariah Snyder	1,551
2009	Mariah Snyder	941
2010	Nicole Kline	1,076
2011	Ali Viola	1,141
2012	Jackie Podolsky	857
2013	Jackie Podolsky	1,253



Mariah Snyder set the single-season shutout record with five in 2008 and owns the career mark with seven.

ALL-TIME RECORDS

COACHING HISTORY

Year	Coach	Overall	Conf.	Home	Road	Neutral
1996	Joanie Murphy	3-14-0	0-0-0	3-3-0	0-11-0	0-0-0
1997	Joanie Murphy	6-13-0	0-0-0	4-7-0	2-6-0	0-0-0
Murphy's Totals		9-27-0	0-0-0	7-10-0	2-17-0	0-0-0
1998	Jen Zebroski	5-12-0	0-0-0	2-2-0	3-9-0	0-1-0
Zebroski's Totals		5-12-0	0-0-0	2-2-0	3-9-0	0-1-0
1999	Liz Bartley	6-11-1	1-4-0	5-3-1	1-8-0	0-0-0
2000	Liz Bartley	0-19-0	0-5-0	0-7-0	0-9-0	0-3-0
2001	Liz Bartley	1-20-0	0-6-0	0-6-0	0-12-0	1-2-0
2002	Liz Bartley	1-19-0	0-6-0	0-8-0	1-9-0	0-2-0
2003	Liz Bartley	2-17-0	1-5-0	2-5-0	0-11-0	0-1-0
Bartley's Totals		10-86-1	2-26-0	7-29-1	2-49-0	1-8-0
2004	Anthony James	1-16-1	1-6-0	0-5-0	1-8-1	0-3-0
2005	Anthony James	1-18-1	1-5-1	1-8-1	0-9-0	0-1-0
2006	Anthony James	3-14-0	1-6-0	1-5-0	2-8-0	0-1-0
2007	Anthony James	1-18-1	0-8-0	1-9-1	0-8-0	0-1-0
2008	Anthony James	4-14-2	0-7-1	1-4-1	3-10-1	0-0-0
James' Totals		10-80-5	3-32-2	4-31-3	6-43-2	0-6-0
2009	Will Lemke	4-10-3	1-6-1	3-4-3	1-6-0	0-0-0
2010	Will Lemke	3-13-1	1-6-1	2-4-0	1-9-1	0-0-0
2011	Will Lemke	3-10-4	0-5-3	2-3-2	1-6-2	0-1-0
2012	Will Lemke	8-9-0	3-4-0	5-5-0	3-4-0	0-0-0
2013	Will Lemke	4-13-1	2-5-0	2-5-1	2-8-0	0-0-0
Lemke's Totals		22-55-9	7-26-5	14-21-6	8-33-3	0-1-0
Overall Totals		56-260-15	12-84-7	34-93-10	21-151-5	1-16-0
Mid-Continent Conference Totals			1-9-0			
Horizon League Totals			11-75-7			

AWARD WINNERS

All-Mid-Continent Conference

Missy Laforet	1999 (2nd)
Jennifer Argiro	1999 (2nd)
Alicia Scopelita	1999 (2nd)

All-Horizon League

Brittany Dowd	2013 (2nd)
Allison Ludwig	2013 (2nd)
Jade Flory	2012 (1st)
Chesley Haney	2012 (2nd)
Jade Flory	2011 (2nd)
Kara Cooper	2009 (2nd)
Carrie Wack	2007 (2nd)
Caitlin Lee	2006 (1st)
Sade Brookman	2005 (2nd)

All-Newcomer Team

Chelsey Haney	2012
Tyesha Kizer	2012
Jade Flory	2011
Allison Ludwig	2010
Kelsey Kempton	2008
Caitlin Bodzioney	2006
Jordan Gapczynski	2006

Caitlin Lee 2005

Academic All-Horizon League

Allison Ludwig	2013
Kelsey Kempton	2011
Kelsey Kempton	2010
Kara Cooper	2009
Jodi Bowlen	2008

COSIDA Academic All-District

Kelsey Kempton	2010 (1st)
Kara Cooper	2009 (2nd)



Allison Ludwig was named All-Horizon League Second-Team and Academic All-Horizon League in 2013.

ALL-TIME RECORDS

ALL-TIME SCORES

1996 Record: 3-14

Coach: Joanie Murphy

Date	Opponent	Score
8/31	Howard	W, 3-0
9/7	at Buffalo	L, 0-6
9/8	at Canisius	L, 0-6
9/15	Pittsburgh	W, 1-0
9/18	Tiffin	L, 1-3
9/21	Wheeling Jesuit	L, 0-1
9/25	at Duquesne	L, 0-4
9/28	at Towson State	L, 0-6
9/29	at Mount St. Mary's	L, 2-4
10/1	at West Virginia	L, 0-5
10/6	at Wright State	L, 0-9
10/9	at Eastern Michigan	L, 0-3
10/14	St. Bonaventure	L, 1-6
10/16	at Toledo	L, 0-4
10/24	at Robert Morris	L, 0-3
10/30	at Saint Francis (Pa.)	L, 1-3
11/1	Slippery Rock	W, 3-1

1997 Record: 6-13

Coach: Joanie Murphy

Date	Opponent	Score
8/29	Wright State	L, 0-1
8/30	at St. Bonaventure	L, 1-6
9/3	Muskingum	W, 6-1
9/6	at Ohio	L, 0-2
9/10	at Kent	W, 3-1
9/17	Toledo	L, 0-3
9/19	Miami (Ohio)	L, 0-2
9/21	Western Illinois	W, 5-1
10/1	Duquesne	L, 0-5
10/4	at Eastern Michigan	L, 1-2 (OT)
10/7	at West Virginia	L, 0-4
10/9	at Hiram	W, 8-0
10/14	Saint Francis (Pa.)	L, 1-2
10/16	at Wheeling Jesuit	L, 0-3
10/18	at Canisius	W, 6-1
10/28	at Slippery Rock	L, 4-5
10/31	VCU	L, 0-1
11/2	at Bowling Green	L, 2-7
11/5	Robert Morris	W, 3-2

1998 Record 5-12

Coach: Jen Zebroski

Date	Opponent	Score
9/1	at Toledo	L, 1-3
9/5	at Liberty	L, 2-4
9/9	Malone	W, 1-0
9/12	at Central Michigan	L, 0-3
9/13	at Ohio	L, 0-6
9/18	at Western Illinois	W, 1-0
9/25	at Duquesne	L, 0-2
9/30	Kent State	L, 0-1
10/2	at Saint Francis (Pa.)	W, 1-0

10/4	Green Bay	W, 2-1
10/9	at VCU	L, 0-2
10/11	at Howard	W, 3-2
10/14	at Eastern Michigan	L, 0-3
10/21	Oakland	L, 0-4
10/24	at Canisius	L, 1-2
10/25	at Robert Morris	L, 1-5
10/31	at Wheeling Jesuit	L, 0-2

1999 Record: 6-11-1

Coach: Liz Bartley

Date	Opponent	Score
9/1	Westminster	W, 4-3 (OT)
9/4	at Morehead State	W, 4-1
9/7	at Kent State	L, 0-6
9/10	at Ball State	W, 1-0
9/11	Marshall	T, 0-0 (W, SO)
9/15	St. Francis (Pa.)	L, 2-3 (OT)
9/17	at Eastern Michigan	L, 0-3
9/19	at Miami (Ohio)	L, 2-8
9/25	at IUPUI#	L, 1-3
9/29	at Niagara	L, 0-3
10/3	at Wright State	L, 0-2
10/10	Western Illinois#	W, 2-1
10/12	Howard	W, 3-1
10/15	at Oral Roberts#	L, 0-2
10/17	at Drury	L, 1-2 OT
10/23	Oakland#	L, 0-1
10/27	Robert Morris	W, 1-0
10/30	at Valparaiso#	L, 0-2

2000 Record: 0-19

Coach: Liz Bartley

Date	Opponent	Score
8/25	at Marshall	L, 0-8
8/29	vs. Air Force	L, 0-14
9/1	at Ball State	L, 1-11
9/3	vs. SE Missouri State	L, 0-9
9/9	at Liberty	L, 0-15
9/10	at VCU	L, 1-17
9/15	Canisius	L, 0-4
9/17	Niagara	L, 1-5
9/23	vs. Utah State	L, 2-7
9/24	at UTEP	L, 0-12
9/28	Detroit	L, 1-5
10/1	Valparaiso#	L, 2-6
10/8	IUPUI#	L, 1-6
10/13	at Western Illinois#	L, 0-8
10/18	at Saint Francis (Pa.)	L, 2-13
10/21	Oral Roberts#	L, 0-11
10/25	at Robert Morris	L, 0-4
10/27	at Oakland#	L, 2-12
10/29	at Binghamton	L, 0-6

2001 Record: 1-20

Coach: Liz Bartley

Date	Opponent	Score
8/31	at Akron	L, 1-3
9/1	vs. Canisius	W, 3-1
9/7	at Idaho State	L, 0-5
9/9	vs. Weber State	L, 1-9
9/19	Oakland	L, 0-1
9/21	VCU	L, 0-4
9/23	Howard	L, 2-4
9/26	at Niagara	L, 1-9
9/28	Butler*	L, 1-3
9/30	Southern Utah	L, 0-3
10/3	at Bowling Green	L, 1-10
10/7	at Milwaukee*	L, 0-5
10/9	at Green Bay*	L, 1-7
10/12	at IUPUI	L, 4-5
10/13	at Wright State*	L, 0-4
10/16	at Howard	L, 1-5
10/23	Robert Morris	L, 1-2
10/27	at Loyola*	L, 0-3
10/28	at Valparaiso	L, 0-2
11/3	at Detroit*	L, 0-7
11/8	vs. Butler^	L, 0-2

2002 Record: 1-19

Coach: Liz Bartley

Date	Opponent	Score
9/1	at Radford	L, 1-2 (OT)
9/4	at Delaware State	W, 14-0
9/7	at Louisville	L, 1-4
9/13	IUPUI	L, 1-2 (OT)
9/15	at Robert Morris	L, 0-8
9/20	Milwaukee*	L, 0-2
9/22	at Duquesne	L, 0-5
9/27	at Oakland	L, 0-8
9/29	at Wright State*	L, 1-7
10/4	at Arizona	L, 0-7
10/6	vs. Idaho State	L, 0-4
10/9	Howard	L, 0-4
10/13	Green Bay*	L, 0-1
10/18	Akron	L, 0-6
10/20	Toledo	L, 0-6
10/25	Detroit*	L, 0-5
10/27	Niagara	L, 1-5
11/1	at Loyola*	L, 0-6
11/3	at Butler*	L, 0-3
11/8	vs. Butler^	L, 0-7

2003 Record: 2-17

Coach: Liz Bartley

Date	Opponent	Score
8/29	at Niagara	L, 0-5
8/31	Robert Morris	L, 1-2
9/3	Duquesne	L, 0-3
9/5	Delaware State	W, 17-0

ALL-TIME RECORDS

ALL-TIME SCORES

9/12	Louisville	L, 1-5	10/14	at Milwaukee*	L, 0-7	2008 Record: 4-14-2
9/14	at Colgate	L, 0-6	10/16	at Valparaiso	L, 1-3	Coach: Anthony James
9/17	at Western Carolina	L, 0-2	10/23	at Green Bay*	L, 0-3	Date Opponent Score
9/21	at Ohio State	L, 0-7	10/28	at Detroit*	L, 0-2	Aug. 24 Kent State L, 0-1
9/28	at Detroit*	L, 0-3	10/30	at Cleveland State*	T, 0-0 (OT)	Aug. 28 at Robert Morris L, 0-2
10/1	at Howard	L, 2-3	11/3	vs. Detroit^	L, 0-4	Sept. 5 at Albany L, 1-2
10/4	Butler*	L, 0-4				Sept. 7 at Siena L, 1-2
10/8	at American	L, 0-4	2006 Record: 3-14			Sept. 11 at Duquesne L, 1-2 (OT)
10/17	at Toledo	L, 0-7	Coach: Anthony James			Sept. 14 Akron L, 2-3
10/19	Wright State*	L, 1-3	Date Opponent Score			Sept. 19 at Saint Francis (Pa.) W, 1-0
10/24	at Green Bay*	L, 1-7	8/25	at Robert Morris	L, 1-3	Sept. 21 at Howard W, 4-0
10/26	at Milwaukee*	L, 0-1	8/27	Northern Michigan	L, 0-1	Sept. 26 Detroit L, 1-2
10/30	Loyola*	W, 1-0	9/1	Canisius	W, 1-0	Sept. 28 Butler L, 0-3
11/2	at Akron	L, 0-8	9/3	at Saint Francis (Pa.)	L, 0-2	Oct. 3 at Valparaiso L, 1-2
11/6	Green Bay^	L, 1-3	9/8	at Bowling Green	L, 0-1	Oct. 5 at IPFW W, 1-0
			9/10	at Kent State	L, 0-1	Oct. 10 Green Bay* T, 0-0 (2OT)
2004 Record: 1-16-1			9/15	vs. Francis Marion	L, 0-2	Oct. 12 Milwaukee* L, 0-3
Coach: Anthony James			9/17	at The Citadel	W, 3-2	Oct. 17 Wheeling Jesuit W, 8-0
Date Opponent Score			9/29	Valparaiso	L, 0-3	Oct. 19 at Wright State* L, 0-2
8/27	at Robert Morris	T, 0-0	10/1	Green Bay*	L, 0-1	Oct. 24 at Cleveland State* L, 1-2 (OT)
8/29	at Kent State	L, 0-3	10/6	Milwaukee*	L, 0-1 (OT)	Oct. 26 at Loyola* L, 1-6
9/3	Detroit*	L, 2-3	10/13	Detroit*	L, 0-3	Oct. 29 at Valparaiso^ T, 0-0 (W, SO)
9/10	vs. UNC-Wilmington	L, 0-8	10/15	at Loyola*	L, 1-4	Nov. 3 at Loyola^ L, 0-5
9/12	at NC State	L, 0-5	10/20	at Butler*	L, 0-2	
9/17	vs. Creighton	L, 1-8	10/22	at Wright State*	L, 0-2	2009 Record: 4-10-3
9/19	at Iowa State	L, 0-1	10/25	at Cleveland State*	W, 3-1	Coach: Will Lemke
9/24	Niagara	L, 1-2	10/29	at Loyola^	L, 0-3	Date Opponent Score
9/26	at Loyola*	L, 0-6				8/21 at Marist L, 0-2
9/28	at Wright State*	L, 0-5	2007 Record: 1-18-1			8/23 at Howard W, 4-2
10/1	Milwaukee*	L, 1-6	Coach: Anthony James			8/28 Canisius T, 2-2 (2OT)
10/3	Green Bay*	L, 0-2	Date Opponent Score			8/30 IPFW W, 2-1 (OT)
10/8	at Butler*	L, 0-2	Aug. 31	at Pittsburgh	L, 0-2	9/6 Kent State L, 0-1
10/10	at IPFW	L, 1-2	Sept. 7	at Jacksonville State	L, 0-1	9/11 at Ohio State L, 0-6
10/15	at Western Michigan	L, 1-4	Sept. 9	vs. East Tennessee State	L, 2-3	9/13 at Bowling Green L, 0-2
10/17	at Cleveland State*	W, 3-1	Sept. 12	Robert Morris	L, 0-1	9/20 Robert Morris W, 2-1 (OT)
10/22	Villanova	L, 0-3	Sept. 14	Albany	L, 1-2	9/27 Saint Francis (Pa.) T, 0-0 (2OT)
11/4	vs. Detroit^	L, 1-2 (OT)	Sept. 16	Howard	W, 5-1	10/2 Loyola* L, 0-1
			Sept. 19	at Kent State	L, 0-2	10/4 at Detroit* L, 1-3
2005 Record: 1-18-1			Sept. 21	IUPUI	L, 2-3 (OT)	10/9 at Green Bay* L, 0-2
Coach: Anthony James			Sept. 23	Bowling Green	L, 0-3	10/11 at Milwaukee* L, 1-6
Date Opponent Score			Sept. 28	Saint Francis (Pa.)	T, 0-0 (2OT)	10/16 Valparaiso* L, 0-2
8/26	at Northern Michigan	L, 0-2	Sept. 30	at Canisius	L, 0-3	10/18 Butler* T, 1-1 (2OT)
8/28	Robert Morris	L, 1-3	Oct. 5	at Green Bay*	L, 2-4	10/23 Wright State* L, 0-2
9/2	at IUPUI	L, 1-4	Oct. 7	at Milwaukee*	L, 1-2	10/25 Cleveland State* W, 1-0
9/4	Ball State	L, 0-1	Oct. 12	Cleveland State*	L, 0-2	
9/9	Manhattan	L, 0-1	Oct. 14	Wright State*	L, 0-3	2010 Record: 3-13-1
9/11	VMI	L, 0-2	Oct. 19	Valparaiso*	L, 0-1	Coach: Will Lemke
9/16	Kent State	L, 0-3	Oct. 21	Loyola	L, 0-3	Date Opponent Score
9/18	IPFW	L, 0-1	Oct. 26	Butler*	L, 1-2	8/20 at Robert Morris W, 3-2
9/23	Saint Francis (Pa.)	L, 0-1	Oct. 28	at Detroit*	L, 0-4	8/22 at Saint Francis (Pa.) L, 0-3
9/25	Wright State*	L, 0-1	Oct. 30	at Cleveland State^	L, 1-2 (OT)	8/26 at IPFW L, 2-3
9/30	at Niagara	L, 0-4				8/29 at Toledo L, 1-4
10/2	at Canisius	L, 0-2				9/3 Howard L, 0-1
10/6	Loyola*	L, 0-1				9/5 UMKC W, 2-1
10/8	Butler*	W, 2-0				9/12 Canisius L, 1-2

ALL-TIME RECORDS

ALL-TIME SCORES

9/17	at Oakland	L, 1-6	2012 Record: 8-9		
9/19	at Michigan	L, 0-1	Coach: Will Lemke		
9/24	Milwaukee*	L, 0-2	Date	Opponent	Score
9/26	Green Bay*	W, 1-0	8/19	at Duquesne	W, 1-0
10/1	at Cleveland State*	L, 0-1	8/24	at Robert Morris	W, 3-2
10/3	at Wright State*	L, 1-2 (OT)	8/28	Buffalo	W, 1-0
10/8	Detroit*	L, 1-4	8/31	Canisius	W, 4-0
10/10	at Loyola*	L, 0-1	9/9	Niagara	L, 1-2 (OT)
10/22	at Butler*	L, 1-2	9/14	at Ohio	L, 0-1
10/24	at Valparaiso*	T, 1-1 (2OT)	9/16	Northern Kentucky	L, 1-2

2011 Record: 3-10-4

Coach: Will Lemke

Date	Opponent	Score	Date	Opponent	Score
8/19	vs. SIU-Edwardsville	L, 0-4	10/6	at Green Bay*	L, 1-2 (OT)
8/21	at UMKC	T, 1-1 (2OT)	10/10	Cleveland State*	L, 0-1@
8/26	at VMI	W, 3-1	10/14	Loyola*	L, 0-2
8/28	Robert Morris	W, 1-0 (OT)	10/20	at Valparaiso*	W, 1-0
9/2	Ursuline College	W, 4-0	10/24	at Detroit*	L, 0-2
9/4	at Canisius	L, 0-1	10/27	Wright State*	W, 2-1 (OT)
9/9	at Kent State	L, 1-6	10/30	Wright State^	L, 0-1 (OT)

2013 Record: 4-13-1

Coach: Will Lemke

Date	Opponent	Score	Date	Opponent	Score
8/23	at Niagara	W, 2-1	9/1	at Buffalo	L, 0-1
8/25	at Canisius	L, 0-1	9/6	Akron	T, 1-1
8/30	Toledo	L, 0-1	9/11	Robert Morris	L, 0-1
9/1	at Buffalo	L, 0-1	9/15	at Northern Kentucky	L, 2-3
9/5	at Detroit*	L, 0-1			
9/11	at Wright State*	T, 1-1 (2OT)			
9/25	at Penn	L, 0-3			
10/1	Butler*	L, 1-2			
10/5	Detroit*	L, 0-1			
10/9	at #12 Milwaukee*	L, 0-3			
10/15	Green Bay*	T, 0-0 (2OT)			
10/20	at Cleveland State*	L, 1-2			
10/23	at Loyola*	L, 0-1			
10/28	Valparaiso*	T, 0-0 (2OT)			



Chelsey Haney led the team with five goals and to a school record eight wins in 2012.

9/20	at Kent State	L, 0-3
9/24	Cedarville	W, 2-1
9/28	at Wright State*	L, 0-1
10/5	Green Bay*	W, 2-1
10/12	at Oakland*	L, 0-2
10/16	at Cleveland State*	W, 1-0
10/19	Valparaiso*	L, 0-2
10/26	at Milwaukee*	L, 2-3
11/1	Detroit*	L, 0-1
11/5	at Oakland^	L, 2-6

* - Horizon League Game

^ - Horizon League Tournament Game

- Mid-Continent Game

(W, SO) - Win in a shootout

@ - Forfeited game



The 2013 campaign marked the inaugural season at Farmers National Bank Field, the women's soccer program's on-campus venue.

ALL-TIME RECORDS

ALL-TIME SERIES RECORDS

AIR FORCE (0-1) 8/29/2000	N	L, 0-14	10/30/2005	H	T, 0-0	HOWARD (6-5) 8/31/1996	A	W, 3-0
ALBANY (0-2) 9/14/2007 9/5/2008	H A	L, 1-2 L, 1-2	10/25/2006	A	W, 3-1	10/11/1998	A	W, 3-2
AKRON (0-4-1) 8/31/2001 10/18/2002 11/2/2003 9/14/2008 9/6/2013	A H A H H	L, 1-3 L, 0-6 L, 0-8 L, 2-3 T, 1-1	10/12/2007	H	L, 0-2	10/12/1999	H	W, 3-1
AMERICAN (0-1) 10/8/2003	A	L, 0-4	10/31/2007	N	L, 1-2 (OT)	9/23/2001	H	L, 2-4
ARIZONA (0-1) 10/4/2002	A	L, 0-7	10/24/2008	A	W, 1-0	10/16/2001	A	L, 1-5
ARIZONA STATE (0-1) 10/4/2002	A	L, 0-7	10/25/2009	H	L, 0-1	10/9/2002	H	L, 0-4
BALL STATE (1-2) 9/1/1999 9/10/2000 9/4/2005	A A H	W, 1-0 L, 1-11 L, 0-1	10/1/2010	A	L, 1-2	10/1/2003	A	L, 2-3
BINGHAMTON (0-1) 10/29/2000	A	L, 0-6	10/20/2011	A	L, 0-1*	9/16/2007	H	W, 5-1
BOWLING GREEN (0-6) 11/2/1997 10/3/2001 9/8/2006 9/23/2007 9/13/2009 9/11/2011	A A A H A H	L, 2-7 L, 1-10 L, 0-1 L, 0-3 L, 0-2 L, 1-2	10/10/2012	H	W, 1-0	9/21/2008	A	W, 4-0
BUFFALO (1-2) 9/7/1996 8/28/2012 9/1/2013	A H A	L, 0-6 W, 1-0 L, 0-1	10/16/2013	A	W, 1-0	8/23/2009	A	W, 4-2
BUTLER (1-12-1) 9/28/2001 11/8/2001 11/3/2002 11/8/2002 11/4/2003 10/10/2004 10/8/2005 10/20/2006 10/26/2007 9/28/2008 10/18/2009 10/22/2010 10/1/2011 9/22/2012	A N A N H A H A H A H A H A	L, 1-3 L, 0-2 L, 0-3 L, 0-7 L, 0-4 L, 0-2 W, 2-0 L, 0-2 L, 1-2 L, 0-3 T, 1-1 (2OT) L, 1-2 L, 1-2	9/14/2003	A	L, 0-6	9/3/2010	H	L, 0-1 (OT)
CANISIUS (4-8-1) 9/8/1996 10/18/1997 10/24/1998 9/15/2000 9/1/2001 10/2/2005 9/1/2006 9/30/2007 8/28/2009 9/12/2010 9/4/2011 8/31/2012 8/25/2013	A A A A N A H A H H A H A	L, 0-6 W, 6-1 L, 1-2 L, 0-4 W, 3-1 L, 0-1 W, 1-0 L, 0-3 T, 2-2 (2OT) L, 1-2 L, 0-1 W, 4-0 L, 0-1	COLGATE (0-1) 9/14/2003	A	L, 0-6	10/2/2005	A	L, 0-1 (OT)
CEDARVILLE (2-0) 9/25/2012 9/24/2013	H H	W, 3-1 W, 2-1	CREIGHTON (0-1) 9/17/2004	N	L, 1-8	IDAHO STATE (0-2) 9/7/2001 10/6/2002	A A	L, 0-5 L, 0-4
CENTRAL MICHIGAN (0-1) 9/12/1998	A	L, 0-3	DELAWARE STATE (2-0) 9/4/2002 9/5/2003	A H	W, 14-0 W, 17-0	IOWA STATE (0-1) 9/19/2004	A	L, 0-1
THE CITADEL (1-0) 9/17/2006	A	W, 3-2	DETROIT (0-16) 9/28/2000 11/3/2001 10/25/2002 9/28/2003 9/3/2004 11/4/2004 10/28/2005 11/03/2005 10/13/2006 10/28/2007 9/26/2008 10/4/2009 10/8/2010 10/5/2011 10/24/2012 11/1/2013	A A H A H N A N H H H A H A H	L, 1-5 L, 0-7 L, 0-5 L, 0-3 L, 2-3 L, 1-2 L, 0-2 L, 0-3 L, 0-4 L, 1-2 L, 1-3 L, 1-4 L, 0-1 L, 0-2 L, 0-1	IPFW (2-3) 10/10/2004 9/18/2005 10/5/2008 8/30/2009 8/26/2010	A H A H A	L, 1-2 L, 0-1 W, 1-0 W, 2-1 (OT) L, 2-3 (2OT)
CLEVELAND STATE (4-6-1) 10/17/2004	A	W, 3-1	DRURY (0-1) 10/17/1999	A	L, 1-2 (OT)	IUPUI (0-6) 9/25/1999 10/8/2000 10/12/2001 9/13/2002 9/2/2005 9/21/2007	A H A A A H	L, 1-3 L, 1-6 L, 4-5 L, 1-2 (OT) L, 1-4 L, 2-3 (OT)
			DUQUESNE (1-6) 9/25/1996 10/1/1997 9/25/1998 9/22/2002 9/3/2003 9/11/2008 8/19/2012	A A A A H A H	L, 0-4 L, 0-5 L, 0-2 L, 0-5 L, 0-3 L, 1-2 (OT) W, 1-0	JACKSONVILLE STATE (0-1) 9/7/2007	A	L, 0-1
			EAST TENNESSEE STATE (0-1) 9/9/2007	N	L, 2-3	KENT STATE (1-10) 9/10/1997 9/30/1998 9/7/1999 8/29/2004 9/16/2005 9/10/2006 9/19/2007 8/24/2008 9/6/2009 9/9/2011 9/20/2014	A H A A H A H H A A	W, 3-1 L, 0-1 L, 0-6 L, 0-3 L, 0-3 L, 0-1 L, 0-2 L, 0-1 L, 0-1 (2OT) L, 1-6 L, 0-3
			EASTERN MICHIGAN (0-4) 10/9/1996 10/4/1997 10/14/1998 9/12/2000	A A A A	L, 0-3 L, 1-2 (OT) L, 0-3 L, 0-3	LIBERTY (0-2) 9/5/1998 9/9/2000	A A	L, 2-4 L, 0-15
			FRANCIS MARION (0-1) 9/15/2006	N	L, 0-1	LOUISVILLE (0-2) 9/7/2002 9/12/2003	A H	L, 1-4 L, 1-5
			GREEN BAY (3-10-2) 10/4/1998 10/9/2001 10/13/2002 10/24/2003 11/6/2003 10/3/2004 10/23/2005 10/1/2006 10/5/2007 10/10/2008 10/9/2009 9/26/2010 10/15/2011 10/6/2012 10/5/2013	H A H A N H A H A H H H A H	W, 2-1 L, 1-7 L, 0-1 L, 1-7 L, 1-3 L, 0-2 L, 0-3 L, 0-1 L, 2-4 T, 0-0 L, 0-2 W, 1-0 T, 0-0 L, 1-2 (OT) W, 1-0	LOYOLA (1-13) 10/27/2001 11/1/2002 10/30/2003 9/26/2004 10/6/2005 10/15/2006 10/29/2006 10/21/2007 10/26/2008 11/3/2008 10/2/2009 10/10/2010 10/23/2011 10/14/2012	A A H A H A N H A N H A A H	L, 0-1 L, 0-6 W, 1-0 L, 0-6 L, 0-1 L, 1-4 L, 0-3 L, 0-3 L, 1-6 L, 0-5 L, 0-1 L, 0-1 L, 0-1 L, 0-2
			HIRAM (1-0) 10/9/1997	A	W, 8-0	MALONE (1-0) 9/9/1998	H	W, 1-0
						MANHATTAN (0-2) 9/11/1999 9/9/2005	H H	T, 0-0 L, 0-1
						MARIST (0-1) 8/21/2009	A	L, 0-2

ALL-TIME RECORDS

ALL-TIME SERIES RECORDS

MARSHALL (0-1-1) 9/11/1999 H T, 0-0 8/25/2000 A L, 0-8	PENN (0-1) 9/25/2011 A L, 0-3	UTAH STATE (0-1) 9/23/2000 N L, 2-7
MIAMI (Ohio) (0-2) 9/19/1997 H L, 0-2 9/19/2000 A L, 2-8	PITTSBURGH (1-1) 9/15/1996 H W, 1-0 8/31/2007 A L, 0-2	UTEP (0-2) 9/24/2000 A L, 0-12
MICHIGAN (0-1) 9/24/2010 A L, 0-1	RADFORD (0-1) 9/1/2002 A L, 1-2 (OT)	VALPARAISO (1-9-3) 10/30/1999 A L, 0-2 10/1/2000 H L, 2-6 10/28/2001 A L, 0-2 10/16/2005 A L, 1-3 9/29/2006 H L, 0-3 10/19/2007 H L, 0-1 10/3/2008 A L, 1-2 10/29/2008 N T, 0-0 (SO) 10/16/2009 H L, 0-2 10/24/2010 A T, 1-1 (2OT) 10/28/2011 H T, 0-0 10/20/2012 A W, 1-0 10/19/2013 H L, 0-1
MILWAUKEE (1-12) 10/7/2001 A L, 0-5 9/20/2002 H L, 0-2 10/26/2003 A L, 0-1 10/01/2004 H L, 1-6 10/14/2005 A L, 0-7 10/06/2006 H L, 0-1 10/07/2007 A L, 1-2 10/12/2008 H L, 0-3 10/13/2009 A L, 1-6 9/24/2010 H L, 0-2 10/9/2011 A L, 0-3 9/29/2012 H W, 2-1 10/26/2013 A L, 2-3	ROBERT MORRIS (6-11-1) 10/24/1996 A L, 0-3 11/15/1997 H W, 3-2 10/25/1998 A L, 1-5 10/27/1999 H W, 1-0 10/25/2000 A L, 0-4 10/23/2001 H L, 0-2 9/15/2002 A L, 0-8 8/31/2003 H L, 1-2 8/27/2004 A T, 0-0 8/28/2005 H L, 1-3 8/25/2006 A L, 1-3 9/12/2007 H L, 0-1 8/28/2008 A L, 0-2 9/20/2009 H W, 2-1 (OT) 8/20/2010 A W, 3-2 8/28/2011 H W, 1-0 (OT) 8/24/2012 H W, 3-2 9/11/2013 H L, 0-1	VILLANOVA (0-1) 10/22/2004 H L, 0-3
MISSOURI-KANSAS CITY (UMKC) (1-0-1) 9/5/2010 H W, 2-1 8/21/2011 A T, 1-1	ST. BONAVENTURE (0-2) 10/14/1996 H L, 1-6 8/30/1997 N L, 1-6	VCU (0-4) 10/31/1997 H L, 0-1 10/9/1998 A L, 0-2 9/10/2000 A L, 1-17 9/21/2001 H L, 0-4
MOREHEAD STATE (1-0) 9/4/1999 A W, 4-1	SAINT FRANCIS (PA) (2-7-2) 10/30/1996 A L, 1-3 10/14/1997 H L, 1-2 10/2/1998 A W, 1-0 9/15/1999 H L, 2-3 (OT) 10/18/2000 A L, 2-13 9/23/2005 H L, 0-1 9/3/2006 A L, 0-2 9/28/2007 H T, 0-0 (2OT) 9/19/2008 A W, 1-0 9/27/2009 H T, 0-0 (2OT) 8/22/2010 A L, 0-3	VMI (1-1) 9/11/2005 H L, 0-2 8/26/2011 A W, 3-1
MOUNT ST. MARY'S (0-1) 9/29/1996 A L, 2-4	SIENA (0-1) 9/0/2008 A L, 1-2	WEBER STATE (0-1) 9/9/2001 N L, 1-9
MUSKINGUM (1-0) 9/3/1997 H W, 6-1	SLIPPERY ROCK (1-1) 11/1/1996 H W, 3-1 10/28/1997 A L, 4-5	WEST VIRGINIA (0-2) 10/1/1996 A L, 0-5 10/7/1997 A L, 0-4
NIAGARA (1-8) 9/29/1999 A L, 0-3 9/17/2000 H L, 1-5 9/26/2001 A L, 1-9 10/27/2002 H L, 1-5 8/29/2003 A L, 0-5 9/24/2004 H L, 1-2 9/30/2005 A L, 0-4 9/9/2012 H L, 1-2 (OT) 8/23/2013 A W, 2-1	SE MISSOURI STATE (0-1) 9/3/2000 N L, 0-9	WESTERN CAROLINA (0-1) 9/17/2003 A L, 0-2
NC STATE (0-1) 9/12/2004 A L, 0-5	SIU-EDWARDSVILLE (0-1) 8/19/2011 N L, 0-4	WESTERN ILLINOIS (3-1) 9/21/1997 H W, 5-1 9/18/1998 A W, 1-0 10/10/1999 H W, 2-1 10/13/2000 A L, 0-8
NORTHERN KENTUCKY (0-1) 9/16/2012 H L, 1-2	SOUTHERN UTAH (0-1) 9/30/2001 H L, 0-3	WESTERN MICHIGAN (0-1) 10/15/2004 A L, 1-4
NORTHERN MICHIGAN (0-2) 8/26/2005 A L, 0-2 8/27/2006 H L, 0-1	TIFFIN (0-1) 9/18/1996 H L, 1-3	WESTMINSTER (1-0) 9/1/1999 H W, 4-3 (OT)
OAKLAND (0-8) 10/21/1998 H L, 0-4 10/23/1999 H L, 0-1 10/27/2000 A L, 2-12 9/19/2001 H L, 0-1 9/27/2002 A L, 0-8 9/17/2010 A L, 1-6 10/12/2013 A L, 0-2 11/5/2013 A L, 2-6	TOLEDO (0-7) 10/16/1996 A L, 0-4 9/17/1997 H L, 0-3 9/1/1998 A L, 1-3 10/20/2002 H L, 0-6 10/17/2003 A L, 0-7 8/29/2010 A L, 1-4 8/30/2013 H L, 0-1	WHEELING JESUIT (1-3) 9/21/1996 H L, 0-1 10/16/1997 A L, 0-3 10/31/1998 A L, 0-2 10/17/2008 H W, 8-0
OHIO (0-4) 9/6/1997 A L, 0-2 9/13/1998 A L, 0-6 9/14/2012 A L, 0-1 9/13/2014 H L, 0-1	TOWSON (0-1) 9/28/1996 A L, 0-6	WRIGHT STATE (1-15-1) 10/1/1996 A L, 0-9 8/29/1997 H L, 0-1 10/3/1999 A L, 0-2 10/13/2001 A L, 0-4 9/29/2002 A L, 1-7 10/19/2003 H L, 1-3 9/28/2004 A L, 0-5 9/25/2005 H L, 0-1 10/22/2006 A L, 0-2 10/14/2007 H L, 0-3 10/19/2008 A L, 0-2 10/23/2009 H L, 0-2 10/3/2010 A L, 1-2 (OT) 9/18/2011 A T, 1-1 10/27/2012 H W, 2-1 (OT) 10/30/2012 H L, 0-1 (OT) 9/28/2013 A L, 0-1
OHIO STATE (0-2) 9/21/2003 A L, 0-7 9/11/2009 A L, 0-6	UNC-WILMINGTON (0-1) 9/10/2004 N L, 0-8	
ORAL ROBERTS (0-2) 10/15/1999 A L, 0-2 10/21/2000 H L, 0-11	URSULINE COLLEGE (1-0) 9/2/2011 H W, 4-0	

ALL-TIME RECORDS

ALL-TIME ROSTER

-A-		Chantel Grooms	2001	Maura Patton	2002-03
Lydia Allen	2009	Sarah Gross	1997	Katie Peterlin	2009-12
Cara Armstrong	2011-Present			Taylor Pickens	2007-09
Amy Angelo	1998-99	Christine Handte	1998-2001	Carrie Playforth	2000
Jennifer Argiro	1996-99	Chelsey Haney	2012-Present	Jackie Podolsky	2012-Present
Lauren Ausmundson	2001-03	Shirley Hartness	2003	Amanda Polles	2005-08
		Brittany Hayes	2010-12		
-B-		Katie Hohmann	2012-Present	-R-	
Amanda Barch	2009	Joy Hollencamp	2005-07	Mia Railing	2001-03
Sarah Bartholomew	2001	Brittney Humphrey	2004-08	Andrea Rando	1996-97
Kathy Baquero	2013-Present	Rachel Hutton	2013-Present	Megan Reed	2000-2001
Becca Bazemore	2010			Kelly Renninger	1997
Julie Bentley	2011-12			Keeley Rice	2005-08
Melanie Berg	2000-01	Cerid Irvine	2001-02	Macey Riese	2012-Present
Caitlin Bestard	2002-05			Lauren Roseman	1999-02
Joy Blasko	1996			Taylor Ross	2013
Caitlin Bodzionez	2006-07	Lauren Jackson	2003	Brittany Ryan	2005
Katie Bollinger	2000-03	Jenny Jacobs	2000-01		
Kate Bonn	2006-09	Katie Jacobs	2001		
Roehelle Boone	2005-09	Jennifer Jennings	2002-05	Shay Sade	2012
Kacey Boros	1996	Amanda Johnson	2010-12	Lisa Schwartz	1996
Jodi Bowlen	2006-09	Roberta Johnson	2004-05	Alicia Scopellite	1996-99
Natalie Brady	2006-09	Kim Jugenheimer	2001-04	Taylor Sebring	2010-13
Lauren Brennan	2007-10			Kearsten Sego	2010-Present
Sadie Brookman	2004-05			Aliesha Sharpe	2010
Tessa Brookman	2004-07	Michelle Kaydo	1997-99	Heather Smolik	1999
Stephanie Butcher	1997	Kelsey Kempton	2008-11	Britta Snowberger	2004-07
Lea Byers	2009-10	Jennifer Ketchum	1996-97	Hannah Snyder	2008-09
		Melanie Kiko	2007	Mariah Snyder	2006-09
-C-		Kelly Kirkwood	1999	Tammy Sos	2002
Corey Cardone	2003-04	Tyeshya Kizer	2012-Present	Sarah Staley	2013-Present
Nicole Centofanti	1997-2000	Karlee Kline	2012-Present	Cori Stark	2009-13
Heather Coonfare	2010-13	Nicole Kline	2008-11	Kelly Storkel	2008-11
Kara Cooper	2008-09	Brianne Kochunas	2002	Geneva Strelka	2008-11
Sarah Crafton	2005-06				
Alisa Crocket	2000				
Rachel Cubellis	2003				
		Melissa Laforet	1996-99	-T-	
-D-		Sierra Lawson	2007	Lauren Tandazo-Kendera	2007
Denise Dario	1998	Hannah Lawther	2001-03	Jessica Tait	1999-02
Katie Deprey	2002-03	Maddie Lawther	2003-05	Sade Tate	2005-06
Mary Kate DeSalvo	1997	Alex Lee	2005-08	Casey Taylor	2004
Casey Dick	2001-05	Caitlin Lee	2005-08	Brittany Tennis	2011-Present
Natalie Dickson	1996-98	Shannon Leghart	2012-Present	Elizabeth Testa	1997-00
Susie Dormain	1996-97	Kristy Ludt	1996-99	Jenna Thomas	2001
Brittany Dowd	2009-13	Allison Ludwig	2010-13	Rebecca Thomas	2007-09
Olivia Dressler	2009				
Maci Dungan	2013-Present			-U-	
Katie Duracky	2004	Laura Mauer	2003	Mia Uzelac	2011
		Kate McHugh	1999-02		
-E-		Jessica McMurray	2008-09	-V-	
Shawny Ehlers	2010	Nicolette Merlo	2013-Present	Samantha Vaughan	2013-Present
Chris Engelis	1996-99	Renee Merlo	2001	Kara Vezza	2004-05
Katie Etheredge	1996	Kaitlin Messer	2005-06	Ali Viola	2010-12
		Alicia Metz	1996-97	Julie Virgalitte	1996
-F-		Rachel Milhoan	2010-12		
Diane Fellabaum	2001-05	Erin Moehle	2002-03	-W-	
Sarah Fennema	1997-98	Katie Montgomery	2013-Present	Carrie Wack	2005-08
Jenna Fink	2005-07	Tracey Moore	1998	Dana Walker	1997-2000
Rebecca Fink	2012-Present	Tara Morey	2007	Dominique Ward	2008
Jade Flory	2011-12	Rachel Morrison	2010-13	Katy Wells	2007
Bridget Frank	1996			Christi Williams	2005-07
				Kara White	2000-03
-G-		Iysha Ollivierre	2008	Rachel Wilds	1999-02
Jordan Gapczynski	2006-09				
Taylor Gapczynski	2010-13			-Y-	
Megan Gibson	1999-02	April Pankewicz	1999-2001	Jessica Yarter	2002-05
Kate Gigliotti	2000-01	Nina Pannoni	2005-08		
Erin Gilmour	2007	Shelby Parks	2009-11	-Z-	
Jamie Granata	2003	Kelly Patrick	1997-98	Kayla Zoccole	2013-Present